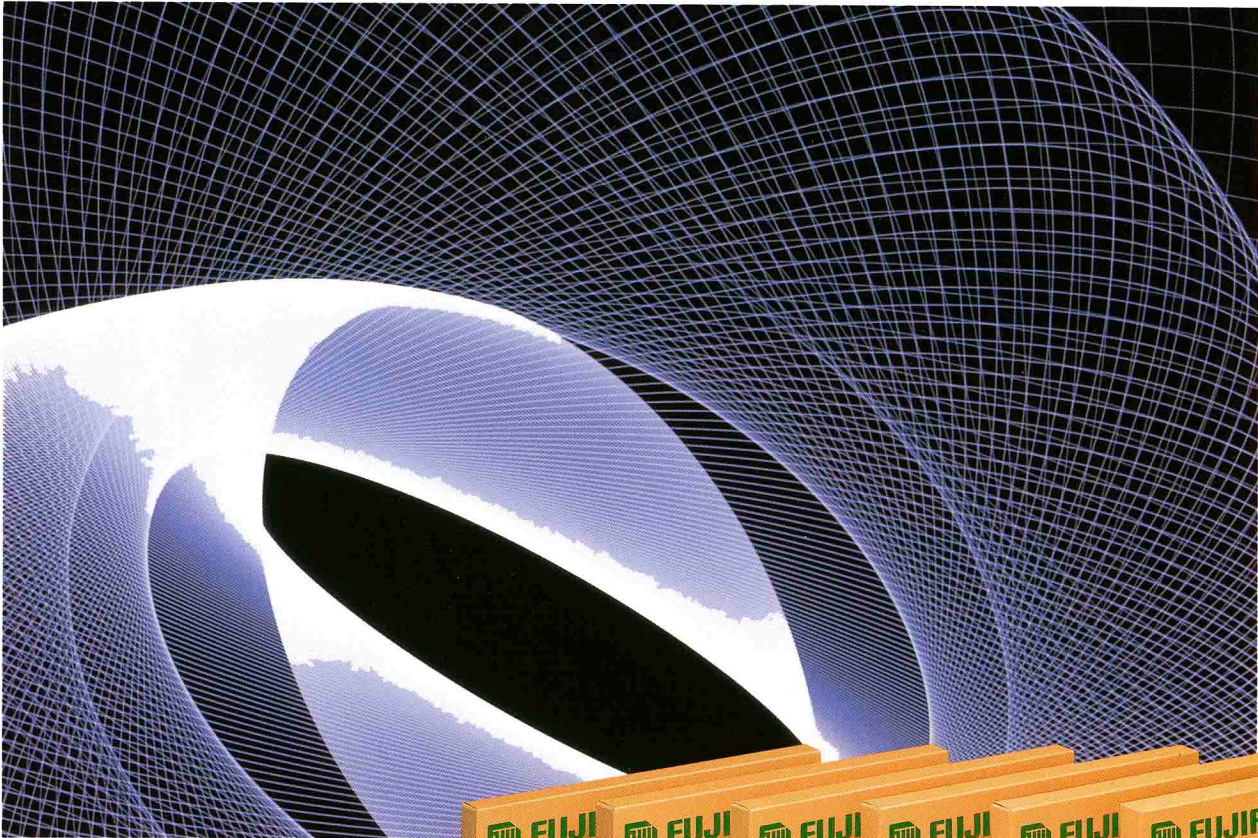


MEDICAL X-RAY FILM

# SUPER HR SERIES



*New easy-to-recycle box for a clean environment.*

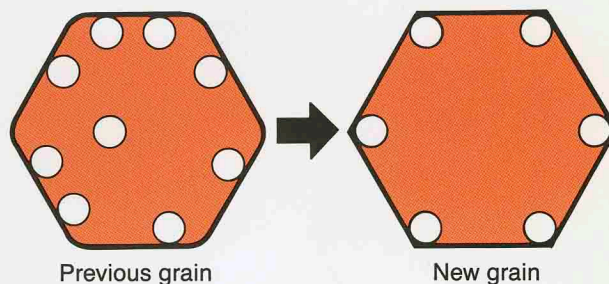
# An advanced new range of orthochromatic films— Superior image quality for all diagnostic applications

*Incorporating Fujifilm's revolutionary Sigma-LIC Grain and Cross-over Control technologies, the SUPER HR series offers fine-grain images with ultra-high resolution. All SUPER-HR films are formulated for super rapid (45 second) processing, and feature a blue tint for easy viewing. Plus, the SUPER-HR series offers 6 different speed and contrast types, ensuring the optimum characteristics for every diagnostic need.*

## Sigma-LIC (Localized Image Centers) Grain Technology

- Fujifilm's unique Sigma-LIC Grain technology greatly increases the efficiency of fluorescent light absorption. It achieves this by allowing spectral sensitizing dyes to be fully absorbed onto the surfaces of the silver halide crystals with large hexagonal surfaces and Sigma ( $\Sigma$ ) shaped edges.
- Latent image centers are concentrated in the corners and edges of the flat hexagonal crystals, enabling light to be absorbed more efficiently. The images formed are more stable and intense than those obtained with conventional materials.

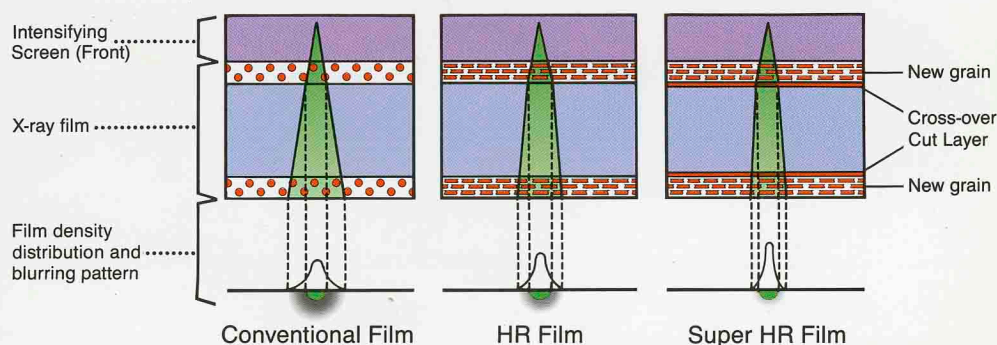
Schematic of latent image formation with Sigma Crystal Technology



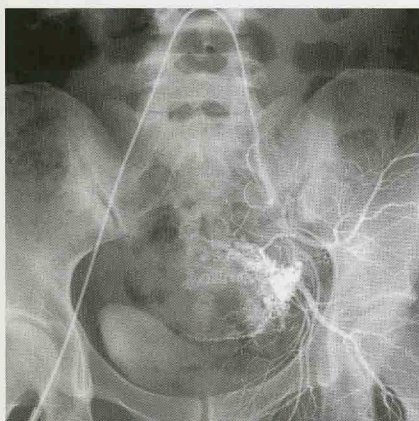
## Cross-over Control Technology

This original Fujifilm technology incorporates an ultra-thin light-absorbing layer between the emulsion layer and film base. By preventing cross-over light, this highly light-absorbent layer significantly reduces image-blurring.

Scattering Behavior of Cross-over Light



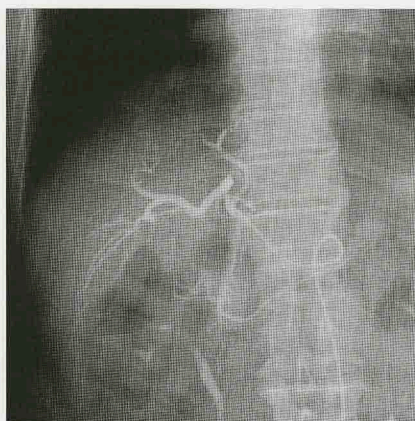
## Standard Speed



**SUPER HR-G<sub>30</sub>**

### **High Contrast Type**

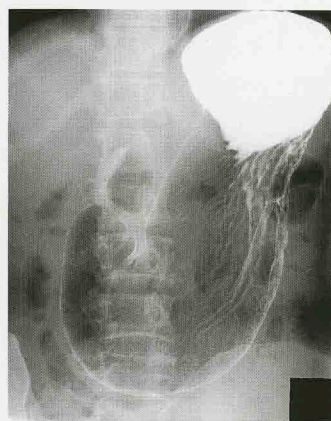
With high contrast characteristics, SUPER HR-G<sub>30</sub> meets a wide range of general radiographic needs, especially where enhanced subject contrast and very high resolution are required.



**SUPER HR-A<sub>30</sub>**

### **High Contrast Type**

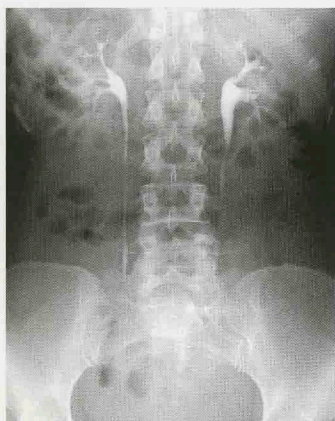
SUPER HR-A<sub>30</sub> provides outstanding contrast and high resolution. It is suitable for X-rays of the skull, spine, extremities, and angiography.



**SUPER HR-S<sub>30</sub>**

### **Medium Contrast Type**

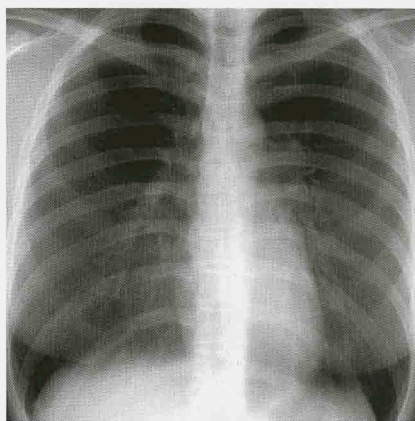
SUPER HR-S<sub>30</sub>, an intermediate contrast film, is designed for easy-to-read details of the particular diagnosis such as the gastrointestinal region and the chest field.



**SUPER HR-L<sub>30</sub>**

### **Wide Latitude Type**

SUPER HR-L<sub>30</sub> provides visualization of a wide range of tissue densities and has excellent exposure latitude.

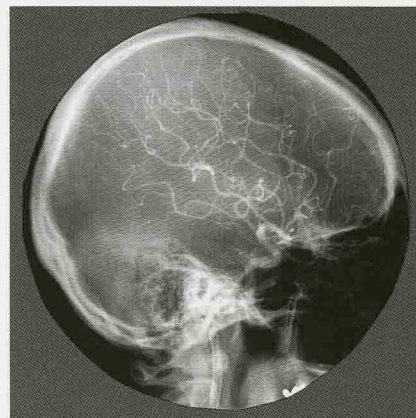


**SUPER HR-C<sub>30</sub>**

### **Ultra Wide Latitude Type**

Designed especially for chest radiography, SUPER HR-C<sub>30</sub> enables highly detailed images of minute calcifications, the lung field, and mediastinum. This film also features excellent tolerance to exposure variations.

## High Speed

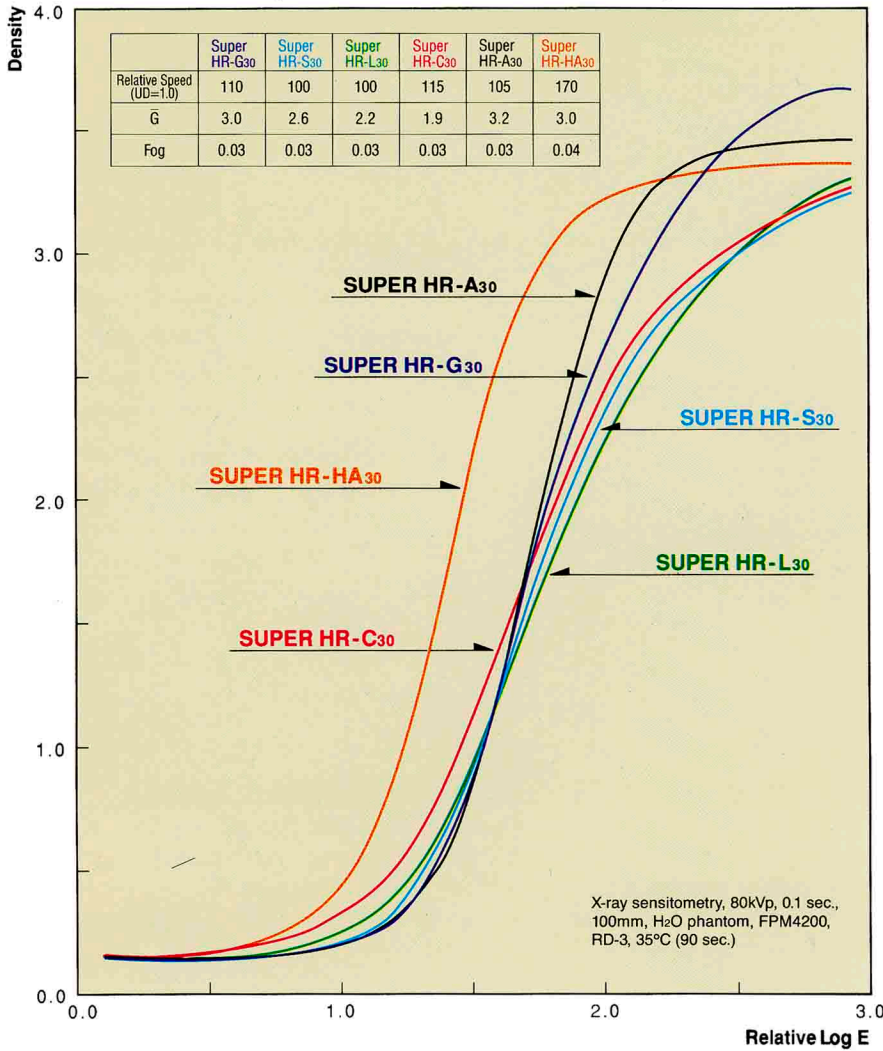


**SUPER HR-HA<sub>30</sub>**

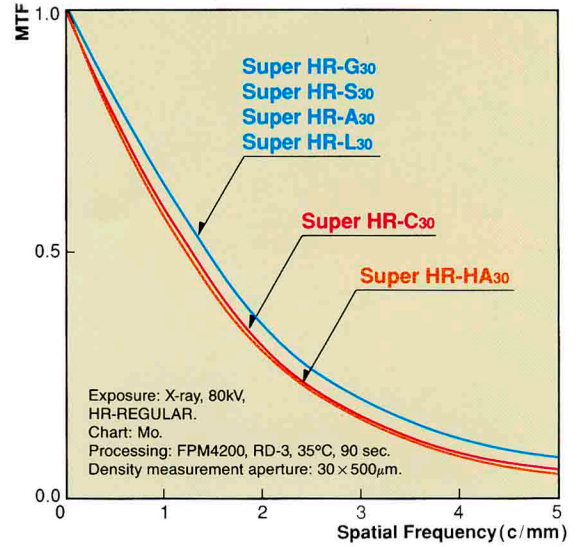
### **High Contrast Type**

SUPER HR-HA<sub>30</sub> is designed for diagnostic applications where exceptionally high contrast is required.

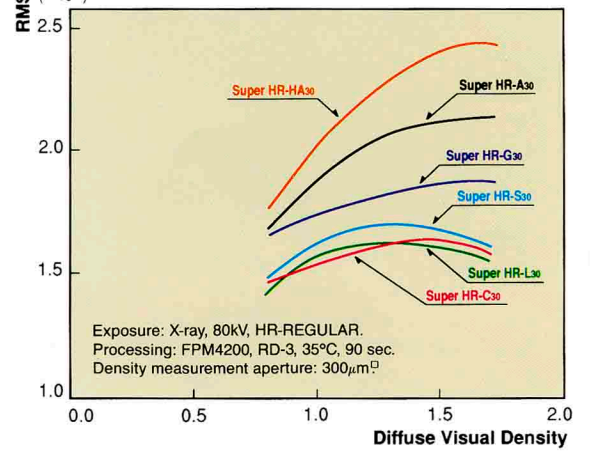
[CHARACTERISTIC CURVES]



[MTF CURVES]



[RMS GRANULARITY CURVES]



[APPLICATIONS]

(⊙ Very suitable ○ Suitable)

Film	Skull	Chest	Spine	G.I. System	Abdomen	G.U. System	Extremities	Angiography
<b>SUPER HR-G30</b>	⊙	○	⊙	⊙	⊙	⊙	⊙	⊙
<b>SUPER HR-S30</b>	○	○	○	⊙	⊙	⊙	○	○
<b>SUPER HR-L30</b>	○	⊙	○	⊙	⊙	○	○	○
<b>SUPER HR-C30</b>		⊙						
<b>SUPER HR-A30</b>	⊙	○	⊙	○	○	○	⊙	⊙
<b>SUPER HR-HA30</b>	○	○	○	○	○	○	○	⊙